

NAME:

PERIOD:

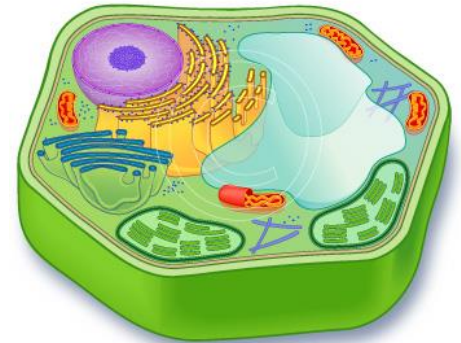
DATE:

Cell Transport Classwork

Answer all questions to the best of your ability. Be specific. Be scientific.

Tell whether the following are **active** or **passive** transport.

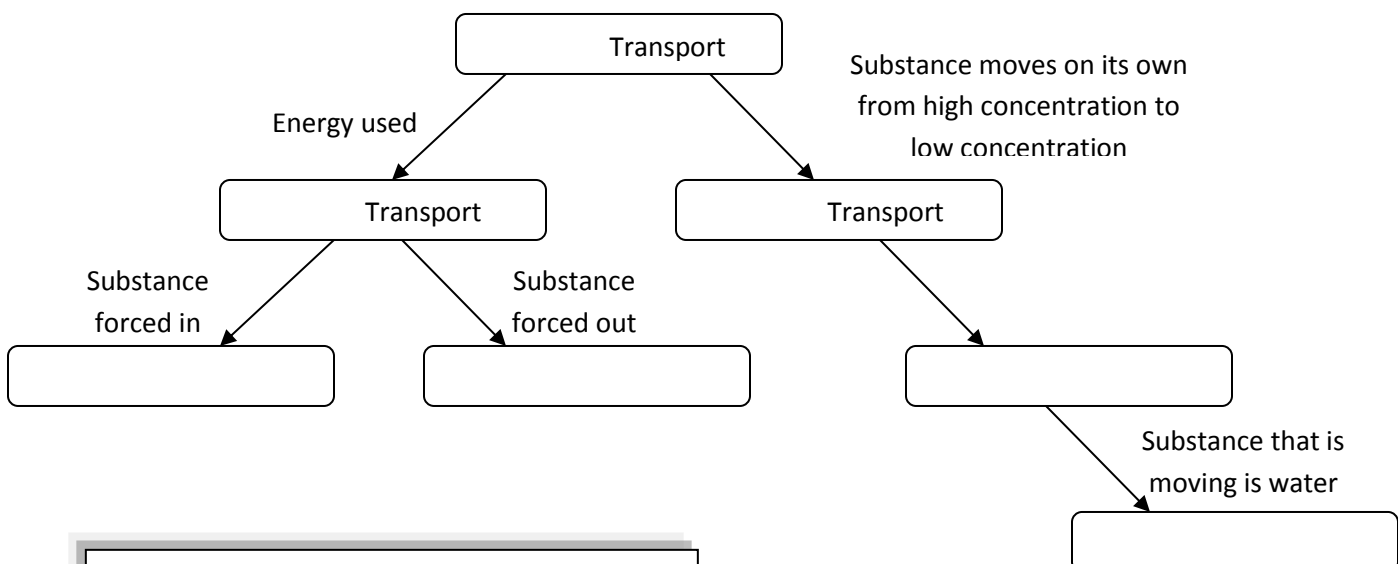
1. (active/passive) A cell opens up to let something out.
2. (active/passive) A liquid seeps into a cell.
3. (active/passive) Oxygen (O₂) passes out of a plant cell.
4. (active/passive) A cell releases a large waste particle.
5. (active/passive) Glucose enters an animal cell.



True or False. **Fix the False** to make them scientifically true.

6. True or False. When a cell uses energy to move something, that's passive transport.
7. True or False. Water floating out of a cell is an example of passive transport.
8. True or False. Passive means "sitting back and letting things happen."

9 - 15. **Fill in the missing parts of the flowchart.** The words to use are in a box below the chart.



Use these words to fill in the chart.

Endocytosis	Osmosis	Active
Diffusion	Passive	Cellular
	Exocytosis	