

NAME:

PERIOD:

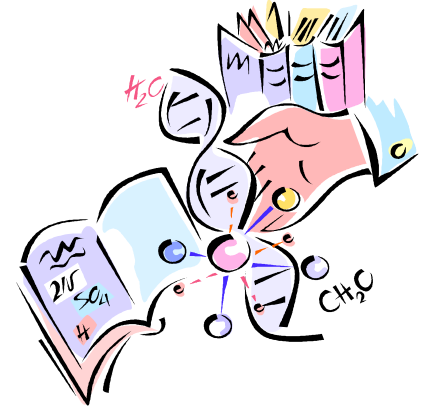
DATE:

DNA Basics

Answer the following questions. Be specific. Be scientific.

TRUE & FALSE: Fix the False statements to make them true.

1. True or False. DNA is a nucleic cheese.
2. True or False. DNA's job is to store cheese.
3. True or False. DNA's shape is like a twisted cheese.
4. True or False. DNA's shape is called a double cheese.
5. True or False. DNA and chromatin are pretty much the same thing.
6. True or False. DNA is made up of nitrogen base pairs and cheese.
7. True or False. DNA contains genes.
8. True or False. DNA contains pieces of "non-cheese" code.
9. True or False. DNA is instructions the nucleus looks at to find out how to make an organism.
10. True or False. There is DNA in each cell of your body.



FILL IN THE BLANK

11. DNA is like a twisted ladder. The outer "rails" are made of _____.
12. DNA is like a twisted ladder. The inner rungs are made of _____.
13. DNA stores _____
14. The pattern of the _____ is the code that stores the information in DNA.
15. In DNA, cytosine (C) always pairs up with _____.
16. In DNA, thymine (T) can be replaced with _____ especially in nonsense code.
17. A piece of DNA that has the code for a specific trait is called a _____.
18. A permanent change in an organism's genetic code is called a _____.
19. DNA stands for _____.
20. Like DNA, but only made of one strand, this nucleic acid carries information for making proteins to the ribosomes: _____.